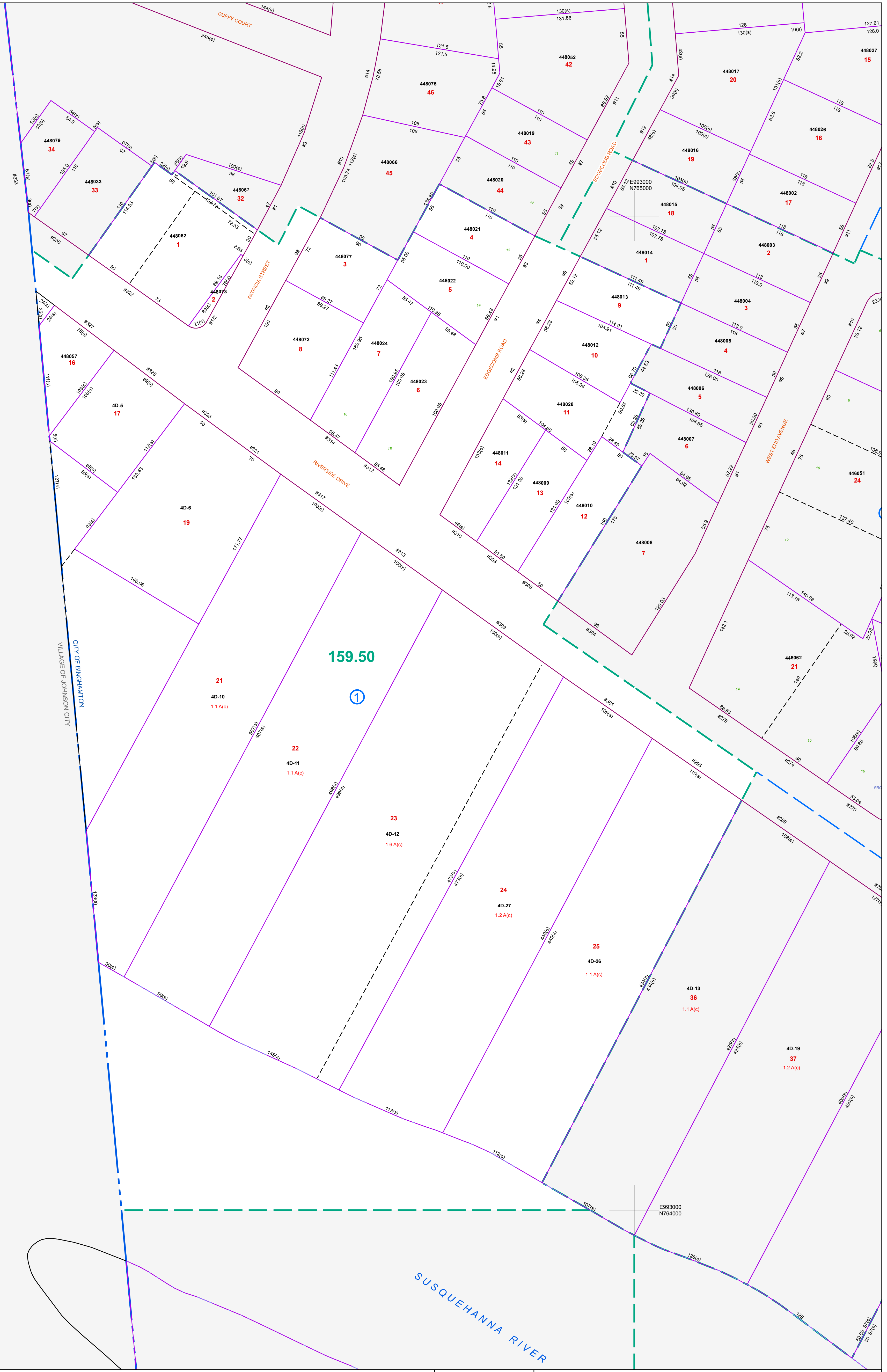


E991500
N785000

E991500
N784000



THIS MAP WAS PRODUCED FOR TAX PURPOSES ONLY AND IS NOT TO BE REPRODUCED OR USED FOR SURVEYING OR CONVEYANCING.

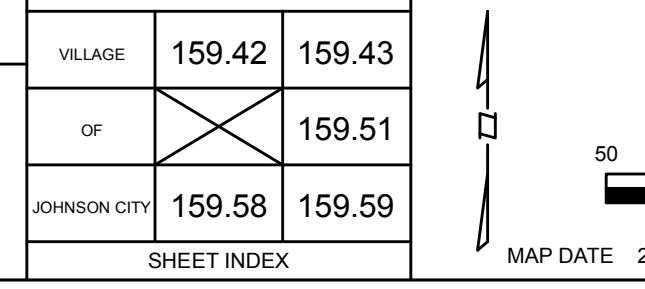
1983 NORTH AMERICAN DATUM
NEW YORK STATE PLANE, CENTRAL ZONE

REVISION TABLE		SPECIAL DISTRICTS	
DATE	MADE BY	CHANGES OR ADDITIONS	

SPECIAL DISTRICTS	
Broome County School District	
City of Binghamton	

LEGEND	
PROPERTY LINE	SOLID LINE
RIGHT OF WAY LINE	DASHED LINE
MUNICIPAL BOUNDARY	DASHED LINE
SUBDIVISION LIMIT	DASHED LINE
COUNTY LINE	DASHED LINE
ORIGINAL LOT LINE	DASHED LINE
RAILROAD	SOLID LINE WITH CROSS-TICKS
STREAM	DASHED LINE WITH WAVES
BLOCK LIMIT	DASHED LINE
SCHOOL DISTRICT LINE	DASHED LINE
FIRE DISTRICT LINE	DASHED LINE
DENOTES COMMON OWNER	SOLID LINE WITH DOTS
PARCEL NUMBER	10
ORIGINAL SUBDIVISION LOT NUMBER	10
TAX MAP BLOCK NUMBER	10
TAX MAP PARCEL NUMBER	06.00-1.10
CALCULATED ACREAGE	20.9 A(1)
DEED ACREAGE	20.9 A
SCALED DIMENSION (FEET)	100 (1)
DEED DIMENSION (FEET)	100
COORDINATE LOCATOR	

SHEET INDEX	
VILLAGE	159.42 159.43
OF	159.51
JOHNSON CITY	159.58 159.59



TAX MAP
CITY OF BINGHAMTON
BROOME COUNTY, NEW YORK

MAP DATE: 2/28/1995

159.50