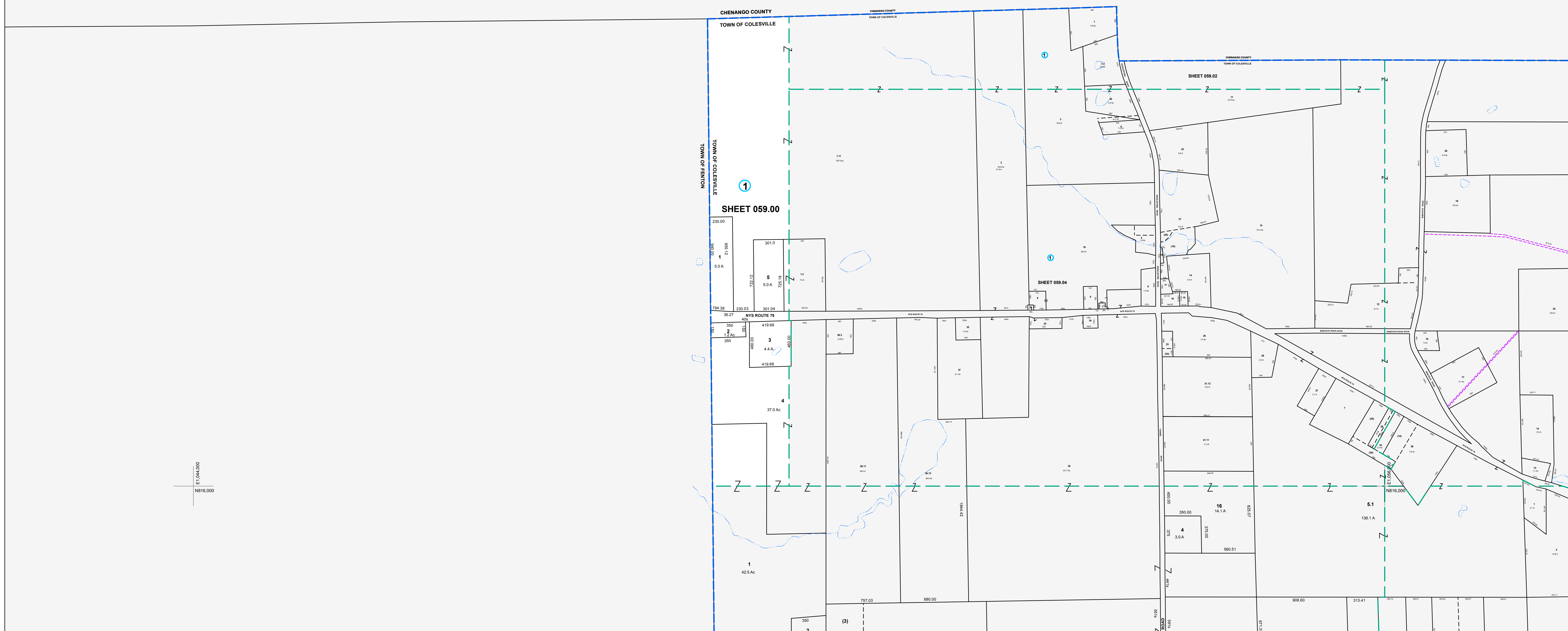


E1044.000  
N824.000

E1056.000  
N824.000



E1044.000  
N816.000



MAP REVISIONS		
DATE	MADE BY	REVISIONS
10/2/2006	DC	059.00-1-5 out of 059.04-1-1-1

SCHOOL DISTRICT AND SPECIAL DISTRICTS	
FIRE: HARPURSVILLE FIRE DISTRICT	SCHOOL: HARPURSVILLE SCHOOL DISTRICT

LEGEND	
PROPERTY LINE	———
RIGHT OF WAY LINE	———
MUNICIPAL BOUNDARY	———
SUBDIVISION LIMIT	———
COUNTY LINE	———
ORIGINAL LOT LINE	———
RAILROAD	———
STREAM	———
BLOCK LIMIT	———
SCHOOL DISTRICT LINE	———
FIRE DISTRICT LINE	———
DENOTES COMMON OWNER	①
PARCEL NUMBER	10
ORIGINAL SUBD LOT NUMBER	10
TAX MAP BLOCK NUMBER	①
TAX MAP PARCEL NUMBER	08.00-1-10
CALCULATED ACREAGE	20.5 A(c)
DEED ACREAGE	20.5 A
SCALED DIMENSION (FEET)	150 (3)
DEED DIMENSION (FEET)	150
COORDINATE LOCATOR	*

1983 North American Datum  
New York State Plane, Central Zone

THIS MAP WAS PRODUCED FOR TAX PURPOSES ONLY AND IS NOT TO BE REPRODUCED OR USED FOR SURVEYING OR CONVEYANCING

CHENANGO	COUNTY
TOWN OF	5902
FENTON	5904
070.00	070.00

MAP DATE	2/7/1995
----------	----------

TAX MAP  
**TOWN OF COLESVILLE**  
BROOME COUNTY, NEW YORK

400 0 400 800 1200

GRAPHIC SCALE - 1" = 400'

**059.00**