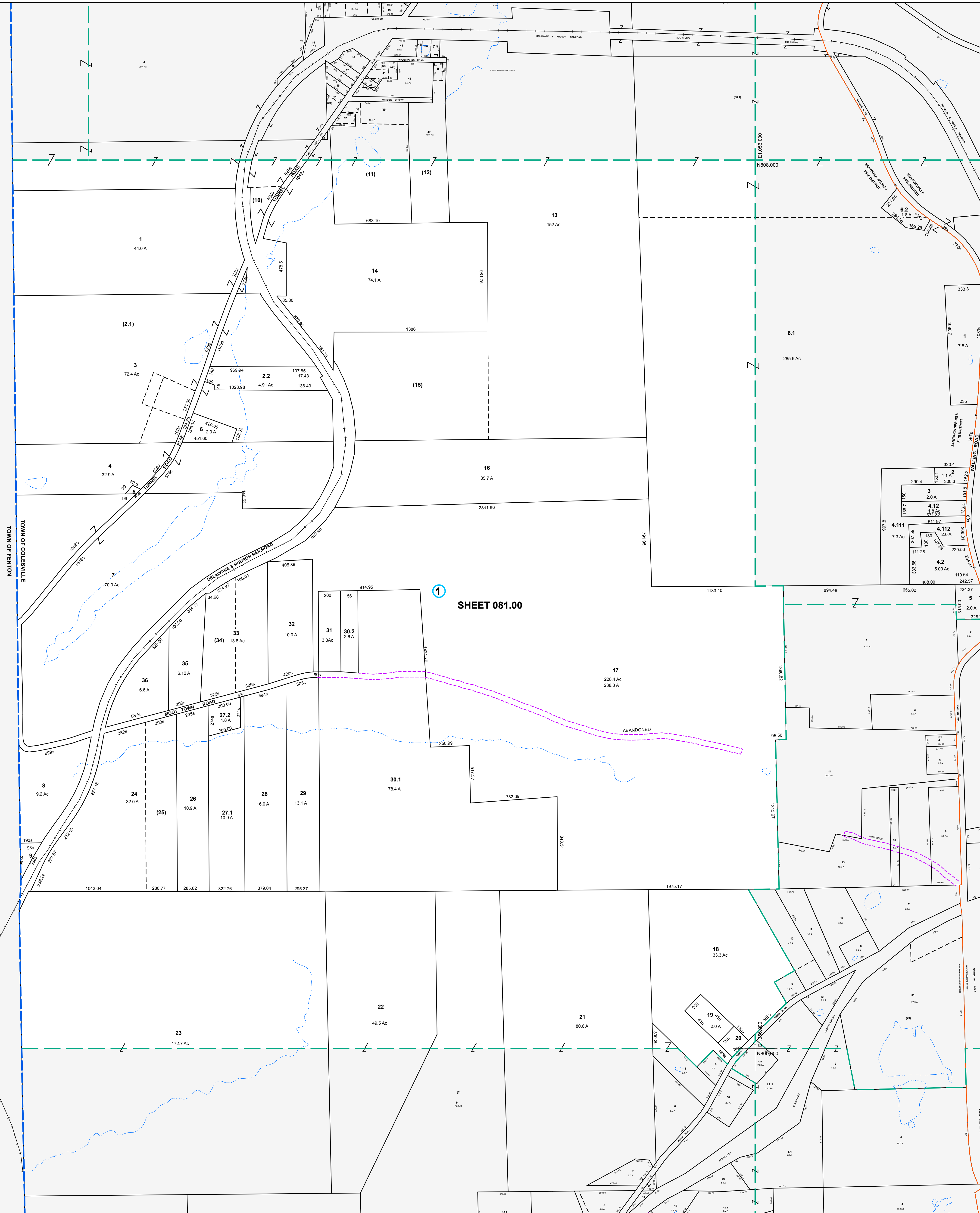


E11041.000
N8008.000

E11041.000
N8000.000



MAP REVISIONS		
DATE	MADE BY	REVISIONS
5/28/2010	BDD	081.00-1-34 cl. 33
2/3/2009	BDD	081.00-1-15 cl. 13
2/2/2008	MAS	Comb 081.00-1-10 into 081.00-1-14
2/28/2005	MAS	Comb 081.00-1-25 into 081.00-1-24
2/24/2005	DMC	081.00-1-41, 010 41

SCHOOL DISTRICT AND SPECIAL DISTRICTS	
FIRE: SANITARIA FIRE DISTRICT	SCHOOL: HARPURSVILLE SCHOOL DISTRICT

LEGEND	
PROPERTY LINE	———
RIGHT OF WAY LINE	———
MUNICIPAL BOUNDARY	———
SUBDIVISION LIMIT	———
COUNTY LINE	———
ORIGINAL LOT LINE	———
RAILROAD	———
STREAM	———
BLOCK LIMIT	———
SCHOOL DISTRICT LINE	———
FIRE DISTRICT LINE	———
NOTES COMMON OWNER	①
PARCEL NUMBER	10
ORIGINAL SUBD LOT NUMBER	10
TAX MAP BLOCK NUMBER	①
TAX MAP PARCEL NUMBER	08.00-1-10
CALCULATED ACREAGE	20.5 A(c)
DEED ACREAGE	20.5 A
SCALED DIMENSION (FEET)	150 (9)
DEED DIMENSION (FEET)	150
COORDINATE LOCATOR	*

1983 North American Datum
New York State Plane, Central Zone

THIS MAP WAS PRODUCED FOR TAX PURPOSES ONLY AND IS NOT TO BE REPRODUCED OR USED FOR SURVEYING OR CONVEYANCING

TOWN	7000	071.03
OF	7004	8200
		8203
FENTON	098.02	099.01

TOWN	7000	071.03
OF	7004	8200
		8203
FENTON	098.02	099.01

TAX MAP
TOWN OF COLESVILLE
BROOME COUNTY, NEW YORK

MAP DATE: 2/7/1995

GRAPHIC SCALE - 1" = 400'

0 400 800 1200

081.00