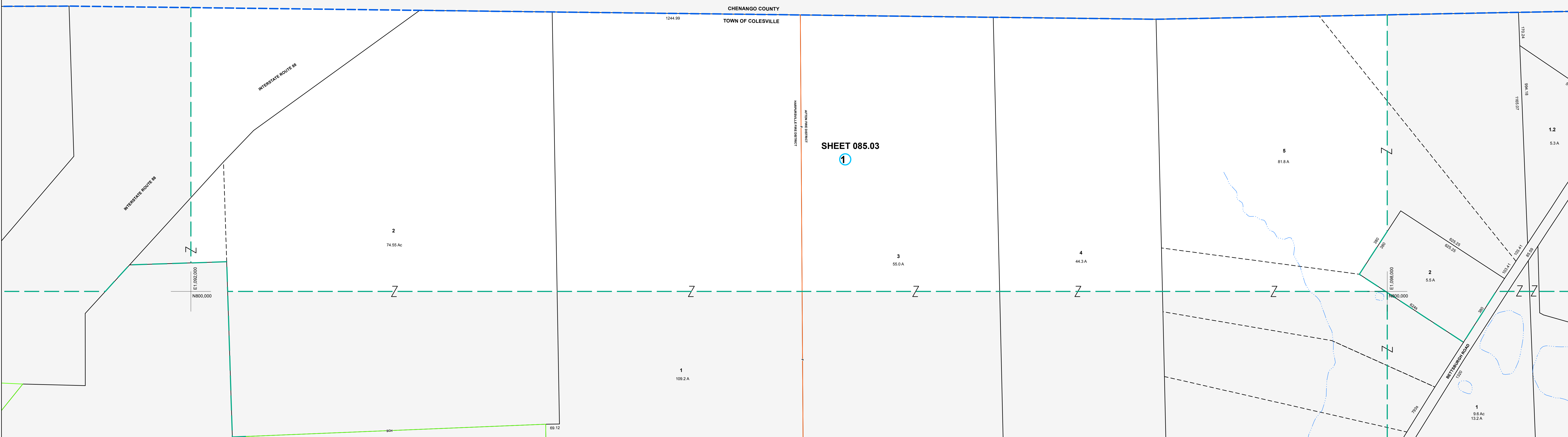


E1,092,000
N804,000

E1,098,000
N804,000



MAP REVISIONS		
DATE	MADE BY	REVISIONS

SCHOOL DISTRICT AND SPECIAL DISTRICTS	
FIRE: HARPURVILLE FIRE DISTRICT	SCHOOL: AFTON SCHOOL DISTRICT
AFTON FIRE DISTRICT	

LEGEND	
PROPERTY LINE	———
RIGHT OF WAY LINE	———
MUNICIPAL BOUNDARY	-----
SUBDIVISION LIMIT	-----
COUNTY LINE	-----
ORIGINAL LOT LINE	-----
RAILROAD	———
STREAM	~~~~~
BLOCK LIMIT	-----
SCHOOL DISTRICT LINE	-----
FIRE DISTRICT LINE	-----
DENOTES COMMON OWNER	①
PARCEL NUMBER	10
ORIGINAL SUBD LOT NUMBER	10
TAX MAP BLOCK NUMBER	①
TAX MAP PARCEL NUMBER	08.00-1-10
CALCULATED ACREAGE	20.5 A(c)
DEED ACREAGE	20.5 A
SCALED DIMENSION (FEET)	150 (3)
DEED DIMENSION (FEET)	150
COORDINATE LOCATOR	*

1983 North American Datum
New York State Plane, Central Zone

THIS MAP WAS PRODUCED FOR TAX PURPOSES ONLY AND IS NOT TO BE REPRODUCED OR USED FOR SURVEYING OR CONVEYANCING

CHENANGO	COUNTY
084.04	085.04
101.02	102.01
102.02	

TOWN OF COLESVILLE
BROOME COUNTY, NEW YORK

MAP DATE 2/7/1995

TAX MAP

TOWN OF COLESVILLE
BROOME COUNTY, NEW YORK

GRAPHIC SCALE - 1" = 200'

085.03