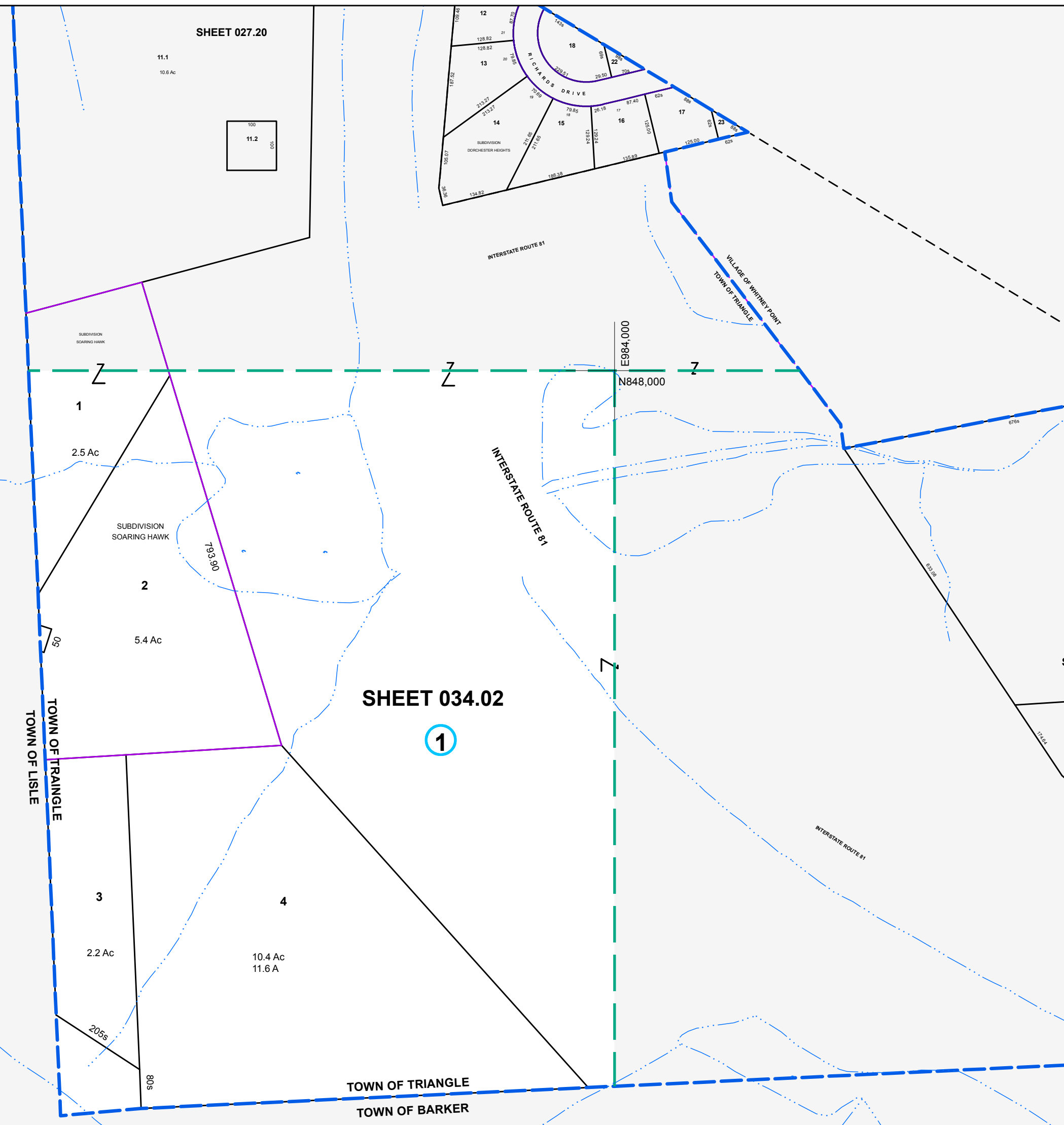


E878.000
N848.000

E878.000
N844.000

E884.000
N844.000



SHEET 027.20

SHEET 034.02

1



MAP REVISIONS		
DATE	MADE BY	REVISIONS

SCHOOL DISTRICT AND SPECIAL DISTRICTS	
FIRE: WHITNEY POINT FIRE DISTRICT	SCHOOL: WHITNEY POINT CENTRAL SCHOOL

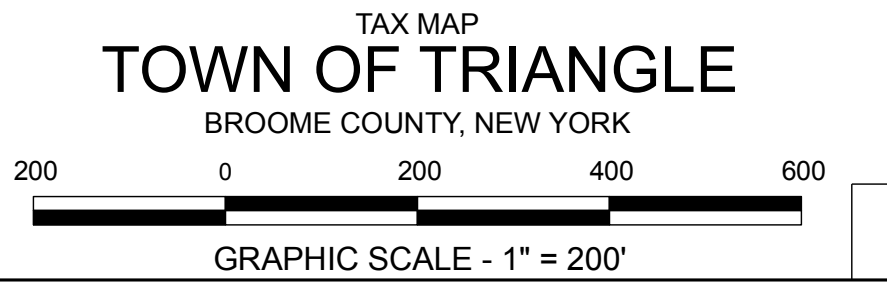
LEGEND	
PROPERTY LINE	———
RIGHT OF WAY LINE	———
MUNICIPAL BOUNDARY	-----
SUBDIVISION LIMIT	-----
COUNTY LINE	-----
ORIGINAL LOT LINE	-----
RAILROAD	———
STREAM	~~~~~
BLOCK LIMIT	-----
SCHOOL DISTRICT LINE	———
FIRE DISTRICT LINE	———
DENOTES COMMON OWNER	①
PARCEL NUMBER	10
ORIGINAL SUBD LOT NUMBER	10
TAX MAP BLOCK NUMBER	①
TAX MAP PARCEL NUMBER	08.00-1-10
CALCULATED ACREAGE	20.5 A(c)
DEED ACREAGE	20.5 A
SCALED DIMENSION (FEET)	150 (5)
DEED DIMENSION (FEET)	150
COORDINATE LOCATOR	•

1983 North American Datum
New York State Plane, Central Zone

THIS MAP WAS PRODUCED FOR TAX PURPOSES ONLY AND IS NOT TO BE REPRODUCED OR USED FOR SURVEYING OR CONVEYANCING

TOWN OF	027.02	WHITNEY PT
LISLE		035.05
NANTICOCKE	TOWN OF	BARKER

MAP DATE 4/15/1994



TAX MAP
TOWN OF TRIANGLE
BROOME COUNTY, NEW YORK
034.02