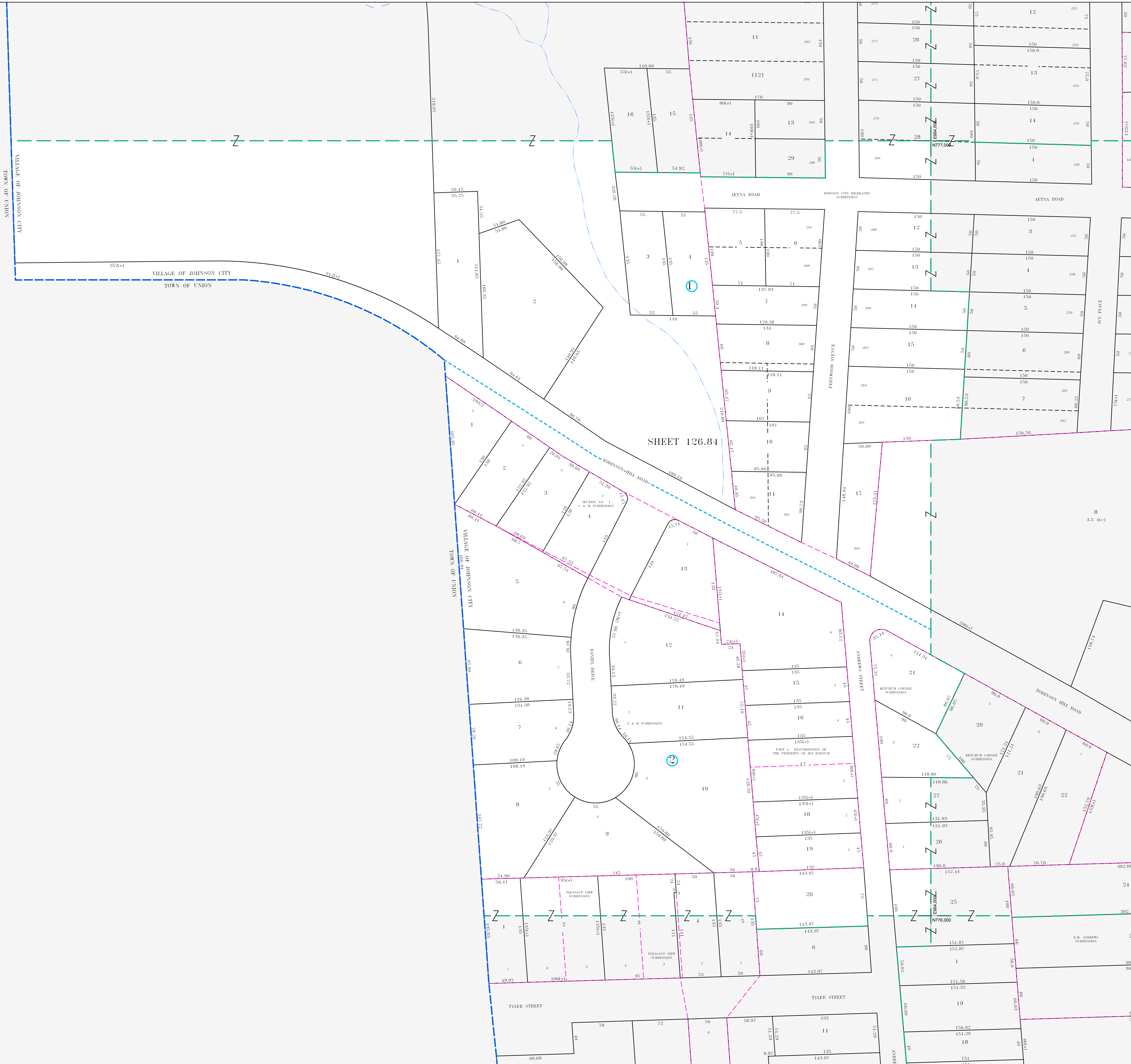


8982.500
N777.000

8982.500
N776.000



| MAP REVISIONS | | |
|---------------|---------|-----------|
| DATE | MADE BY | REVISIONS |
| | | |
| | | |

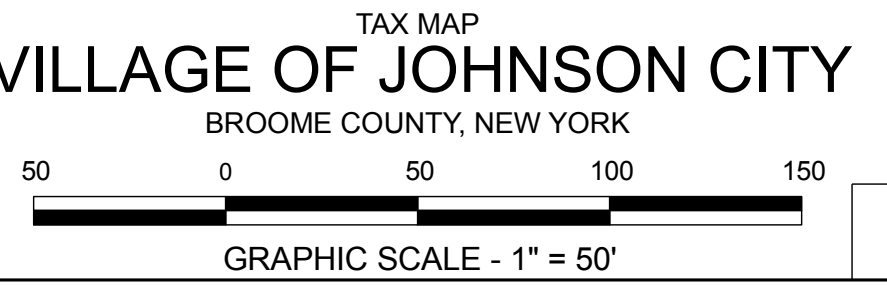
| SCHOOL DISTRICT AND SPECIAL DISTRICTS | |
|---------------------------------------|--------------------------------------|
| FIRE: JOHNSON CITY FIRE DISTRICT | SCHOOL: JOHNSON CITY SCHOOL DISTRICT |
| | |
| | |

| LEGEND | |
|--------------------------|-------|
| PROPERTY LINE | ——— |
| RIGHT OF WAY LINE | ——— |
| MUNICIPAL BOUNDARY | ——— |
| SUBDIVISION LIMIT | ——— |
| COUNTY LINE | ——— |
| ORIGINAL LOT LINE | ——— |
| RAILROAD | ——— |
| STREAM | ~~~~~ |
| BLOCK LIMIT | ——— |
| SCHOOL DISTRICT LINE | ——— |
| FIRE DISTRICT LINE | ——— |
| NOTES COMMON OWNER | Z |
| PARCEL NUMBER | 10 |
| ORIGINAL SUBD LOT NUMBER | 10 |
| TAX MAP BLOCK NUMBER | 10 |

| 1983 North American Datum New York State Plane, Central Zone | |
|---|------------|
| TAX MAP PARCEL NUMBER | 08.00-1-10 |
| CALCULATED ACREAGE | 20.5 A(±) |
| DEED ACREAGE | 20.5 A |
| SCALED DIMENSION (FEET) | 150.0 |
| DEED DIMENSION (FEET) | 150 |
| COORDINATE LOCATOR | • |

| TOWN | |
|--------|---------------|
| 126.76 | 127.69 |
| OF | 127.77 |
| UNION | 142.28 143.21 |

| TAX MAP | |
|-------------------------|--|
| VILLAGE OF JOHNSON CITY | |
| BROOME COUNTY, NEW YORK | |
| MAP DATE 4/21/1995 | |



126.84