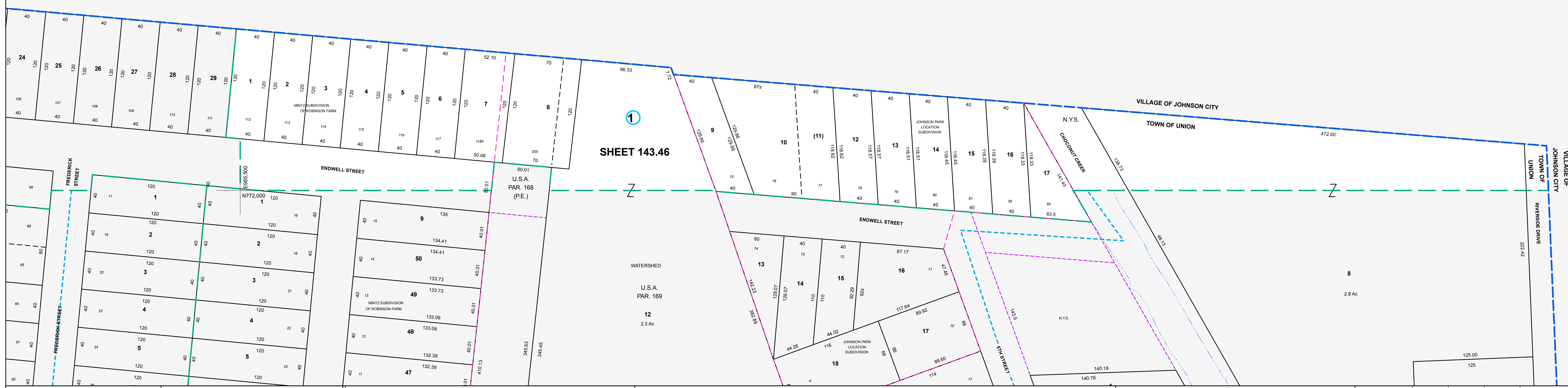


1687.000
N773.000

1687.000
N773.000



1687.000
N772.000



MAP REVISIONS		
DATE	MADE BY	REVISIONS

SCHOOL DISTRICT AND SPECIAL DISTRICTS	
FIRE: JOHNSON CITY FIRE DISTRICT	SCHOOL: JOHNSON CITY SCHOOL DISTRICT

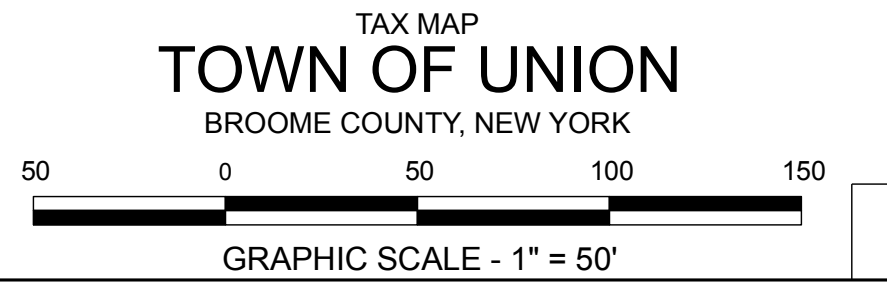
LEGEND	
PROPERTY LINE	———
RIGHT OF WAY LINE	———
MUNICIPAL BOUNDARY	———
SUBDIVISION LIMIT	———
COUNTY LINE	———
ORIGINAL LOT LINE	———
RAILROAD	———
STREAM	———
BLOCK LIMIT	———
SCHOOL DISTRICT LINE	———
FIRE DISTRICT LINE	———
DENOTES COMMON OWNER	———
PARCEL NUMBER	10
ORIGINAL SUB LOT NUMBER	10
TAX MAP BLOCK NUMBER	①
TAX MAP PARCEL NUMBER	08.00-1-10
CALCULATED ACREAGE	20.5 A(±)
DEED ACREAGE	20.5 A
SCALED DIMENSION (FEET)	150 (±)
DEED DIMENSION (FEET)	150
COORDINATE LOCATOR	*

1983 North American Datum
New York State Plane, Central Zone

THIS MAP WAS PRODUCED FOR TAX PURPOSES ONLY AND IS NOT TO BE REPRODUCED OR USED FOR SURVEYING OR CONVEYANCING

VILLAGE	OF	JOHNSON CI
143.45		VILLAGE OF
143.61	143.62	JOHNSON CI

TAX MAP	
TOWN OF UNION	
BROOME COUNTY, NEW YORK	
MAP DATE	8/10/1995



143.46