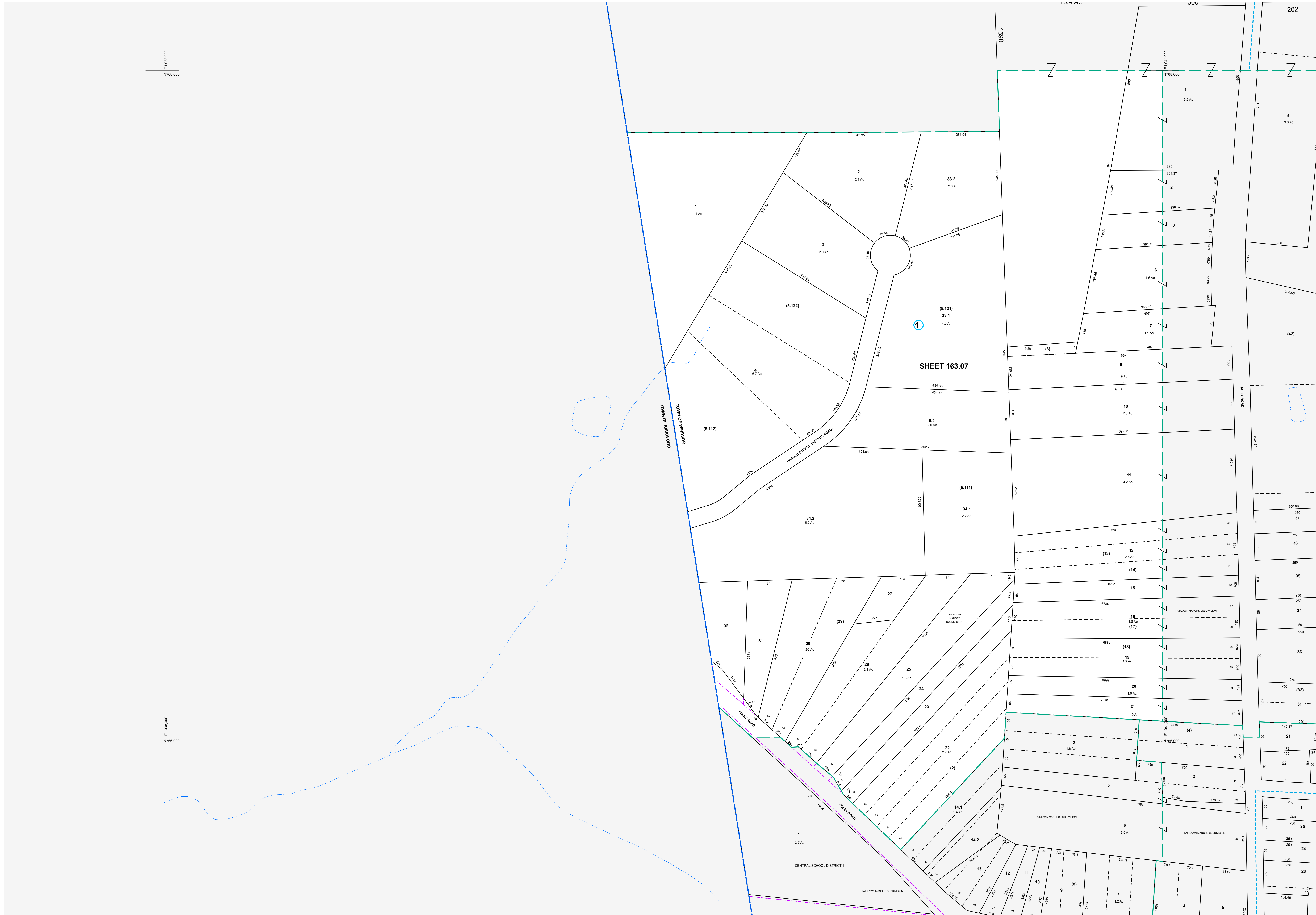


E:1,048,000  
N:768,000

E:1,048,000  
N:768,000



MAP REVISIONS		
DATE	MADE BY	REVISIONS
2/18/2010	BDD	163.11-1-2 of 163.07-1-22
2/18/2010	BDD	163.07-1-29 of 163.07-1-22
2/27/2008	ENB	163.07-1-13 & 163.07-1-14 of 163.07-1-12
3/1/2008	DMC	163.07-1-17 of 163.07-1-16
5/29/2002	ENB	163.07-1-33.2 of 163.07-1-33

SCHOOL DISTRICT AND SPECIAL DISTRICTS	
FIRE: WEST WINDSOR FIRE DISTRICT	SCHOOL: WINDSOR SCHOOL DISTRICT

LEGEND	
PROPERTY LINE	———
RIGHT OF WAY LINE	———
MUNICIPAL BOUNDARY	———
SUBDIVISION LIMIT	———
COUNTY LINE	———
ORIGINAL LOT LINE	———
RAILROAD	———
STREAM	———
BLOCK LIMIT	———
SCHOOL DISTRICT LINE	———
FIRE DISTRICT LINE	———
DENOTES COMMON OWNER	①
PARCEL NUMBER	10
ORIGINAL SUBD LOT NUMBER	10
TAX MAP BLOCK NUMBER	①
TAX MAP PARCEL NUMBER	08.00-1-10
CALCULATED ACREAGE	20.5 AC
DEED ACREAGE	20.5 A
SCALED DIMENSION (FEET)	150 (3)
DEED DIMENSION (FEET)	150
COORDINATE LOCATOR	*

1983 North American Datum  
New York State Plane, Central Zone

THIS MAP WAS PRODUCED FOR TAX PURPOSES ONLY AND IS NOT TO BE REPRODUCED OR USED FOR SURVEYING OR CONVEYANCING

TOWN	147.04	147.04
OF		163.08
KIRKWOOD	163.11	163.12

TOWN OF WINDSOR  
BROOME COUNTY, NEW YORK

MAP DATE: 6/21/1995

GRAPHIC SCALE - 1" = 100'

163.07