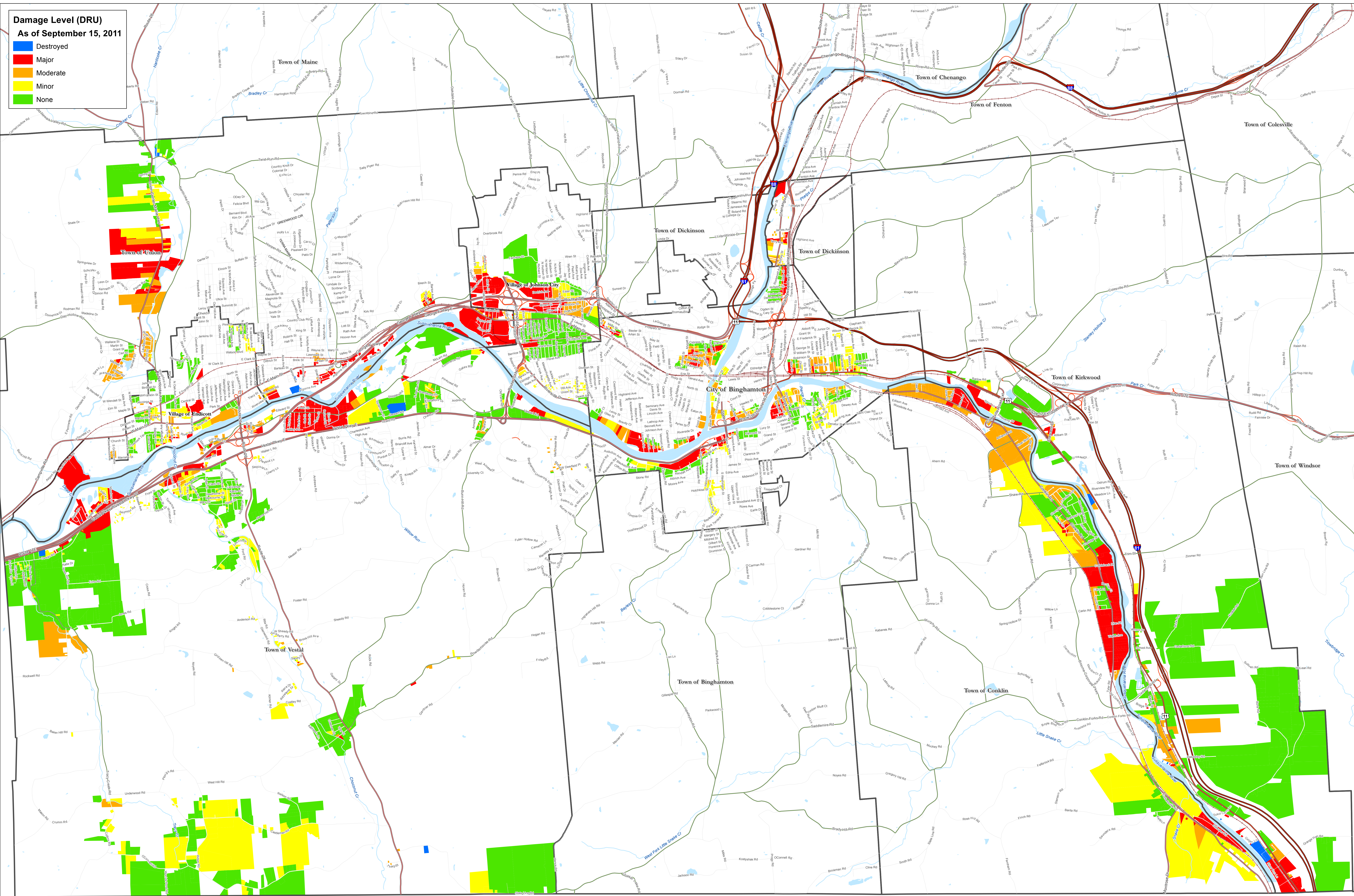


Broome County 2011 Flood

Damage Level (DRU) As of September 15, 2011

- Destroyed
- Major
- Moderate
- Minor
- None



0 2,000 4,000 6,000 8,000 Feet

Department of Planning
GIS and Mapping Services
 County Office Building Web: www.bcgis.com
 60 Hawley Street, 5th Floor Phone: 607-778-2114
 Binghamton, New York 13901 Fax: 607-778-2125
 Map created September 26, 2011
 By: Benjamin English

Broome County, New York
GIS
 www.bcgis.com

DISCLAIMER: Broome County does not guarantee the accuracy of the data presented. Information should be used for illustrative purposes only.
WARNING: This map constitutes the creation of a new public record per NYS FOIL. Therefore, it and any associated digital data, are subject to release per the Broome County GIS Mapping and Data Fee Schedule. This release can occur without the prior notification or consent of the original map requester.